

C-DESERT-226



The Flooring Solutions

your color story

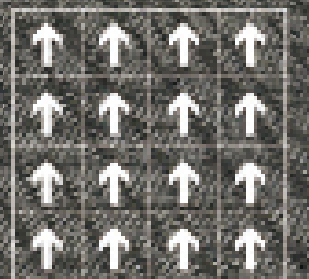
PATTERNS

50cm x 50cm 60cm x 60cm

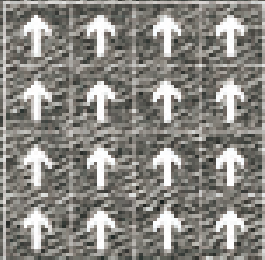
INDEX

PAGE

C-DESERT 226004	2
C-DESERT 226001-03-11	3
C-DESERT 226001-02-04	4
C-DESERT 226003-13	5
C-DESERT 226001-02-03-04	6
Specification	8



C-DESERT 226004

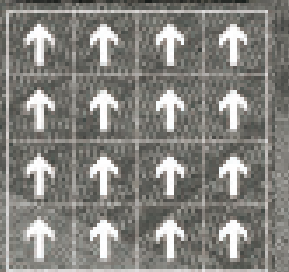


C-DESERT 226001-03-11

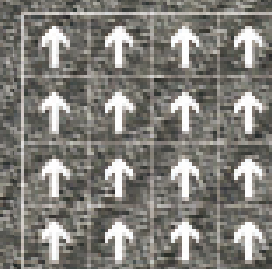
5:3:2



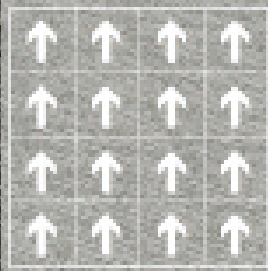
OPEN TH



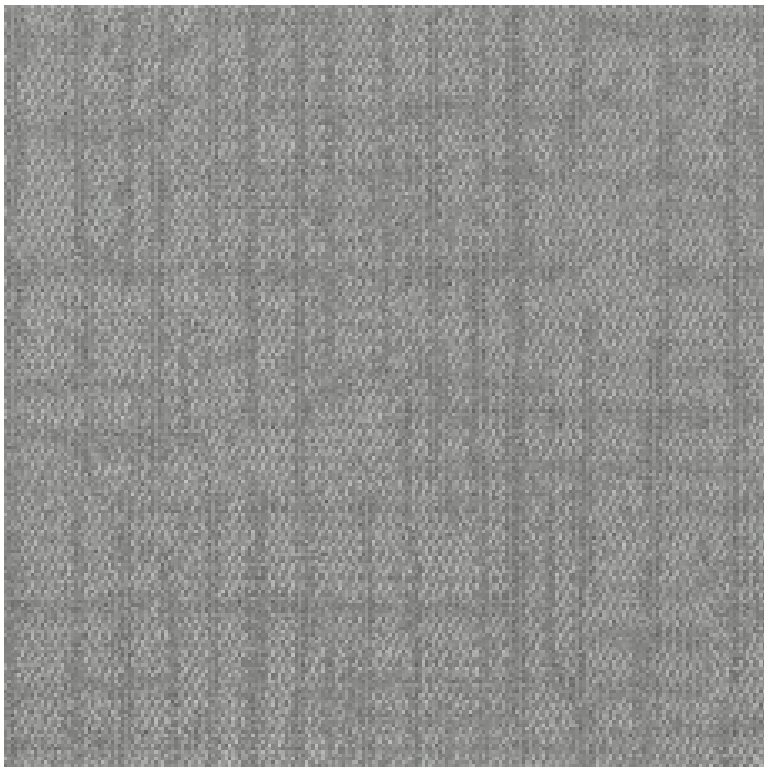
C-DESERT 226001-02-04
1:2:1



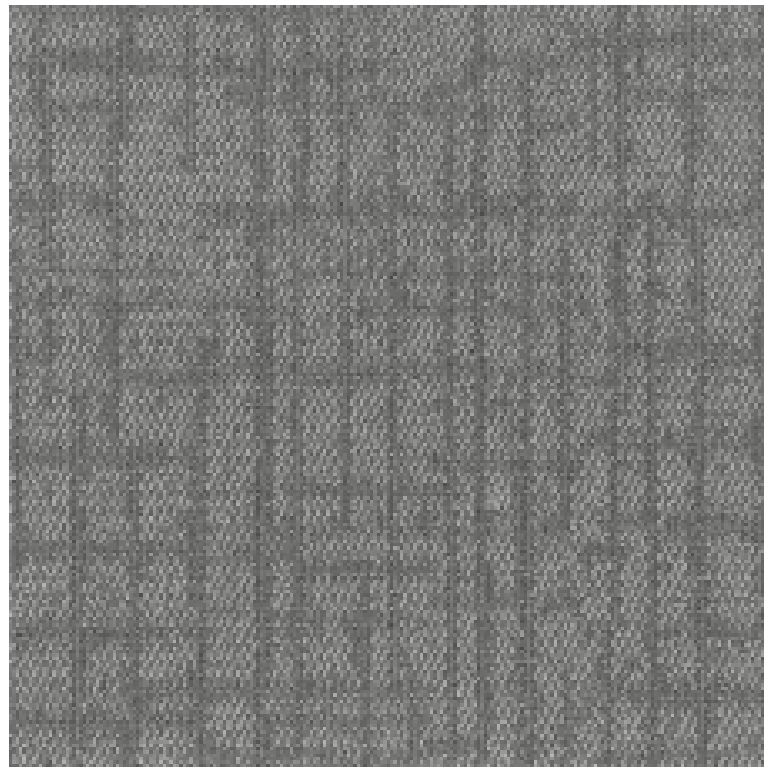
C-DESERT 226003-13



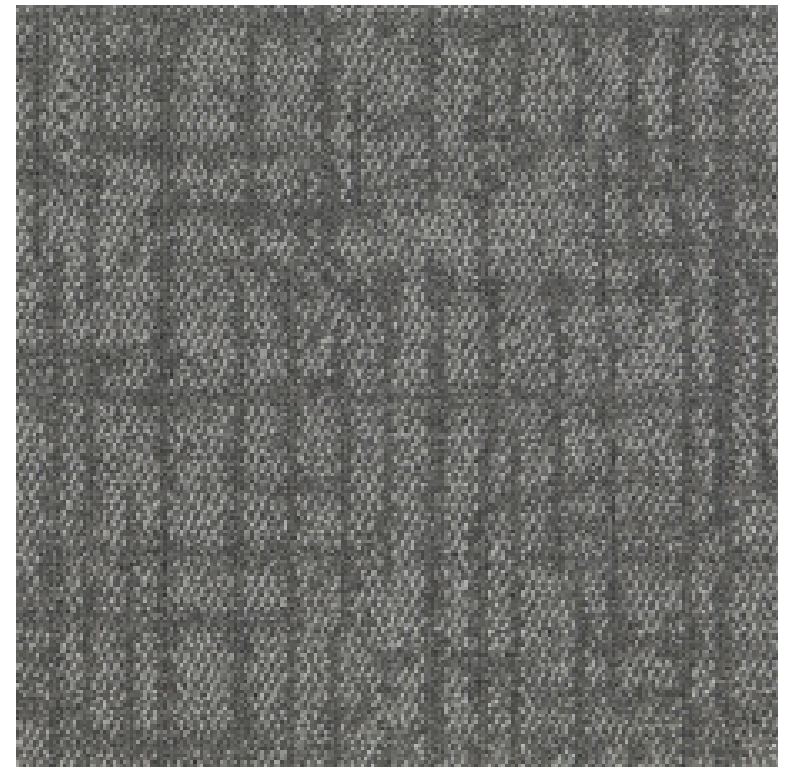
C-DESERT 226001-02-03-04



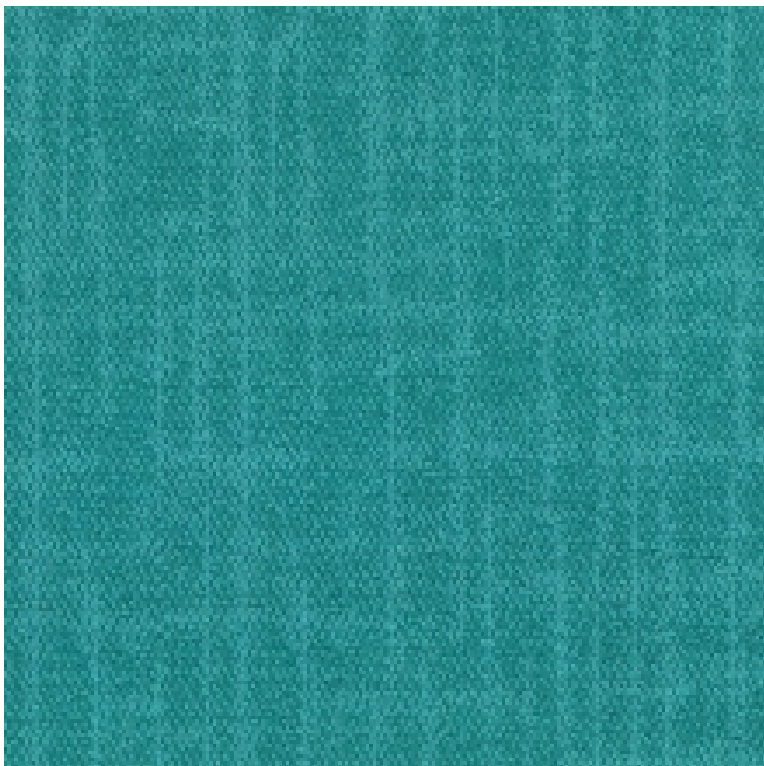
C-DESERT 226001



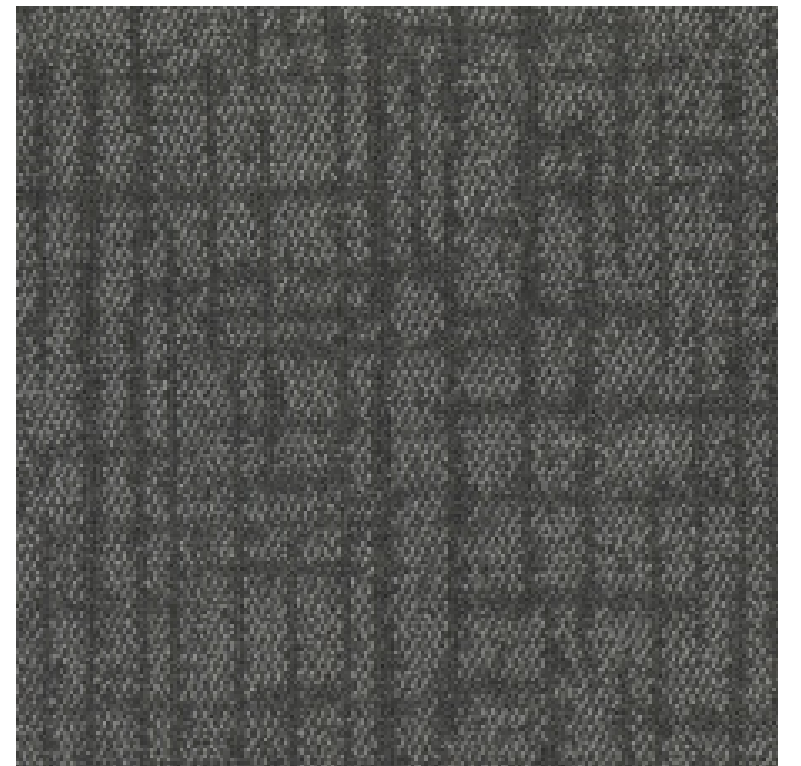
C-DESERT 226002



C-DESERT 226003



C-DESERT 226013



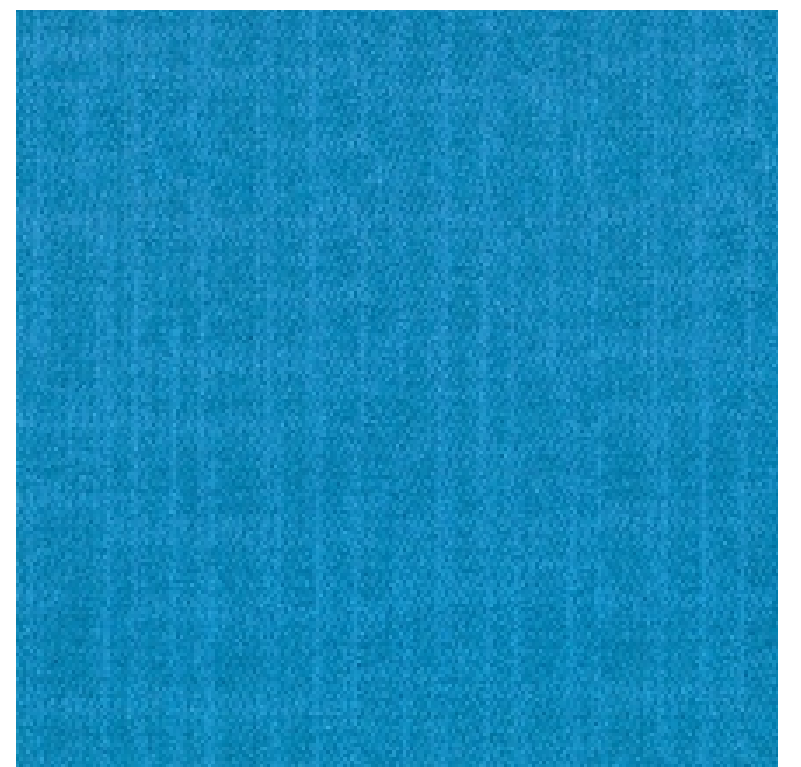
C-DESERT 226004



C-DESERT 226011



C-DESERT 226012

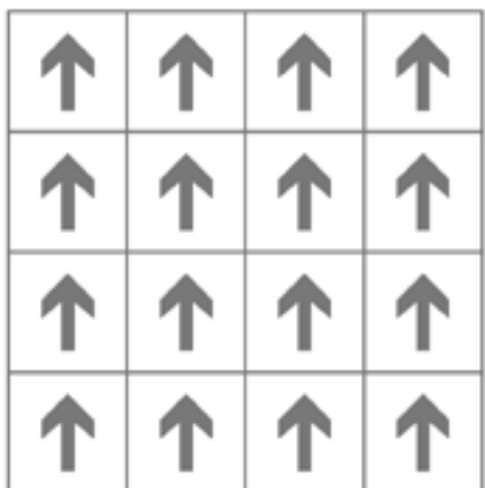


C-DESERT 226014

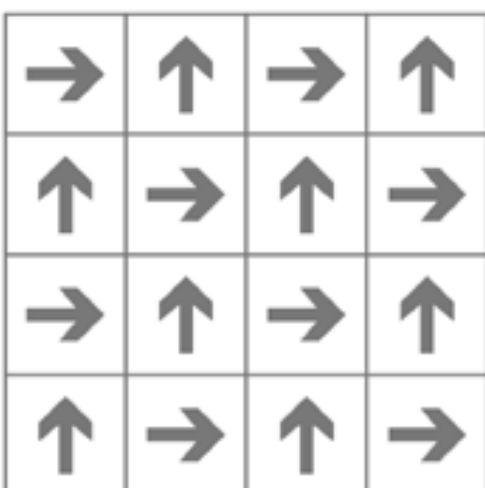
Specification

Product Name	C-DESERT 226
Product Code	C-DESERT 226
Tufted construction	Multi-level Loop
Fiber	100% Synthetic Fibre 100%
Dye method	Solution Dyed
Gauge	1/12
Tufted weight(g/m ²)	560±5%
Tile size(mm)	500 x 500 / 600 x 600
Pile height(mm)	4.0 ± 0.5
Total thickness(mm)	6.5 ± 0.5
Standard Backing	Glass fiber reinforced PVC

Recommended installation methods



Monolithic



Quarter-Turn

 Anti-fouling	 Anti-static	 Environmental	 Passed various tests	 Fashion colors	 No fuzzing
 Reduced Flammability	 Isolation acoustic	 Colorfast	 Chair roulettes	 No zippering	 Wear resistance
 Soil Resistance	 Wear Warranties	 Dimensional Stability	 Long life-span	 Easy to transport	 Non-moid